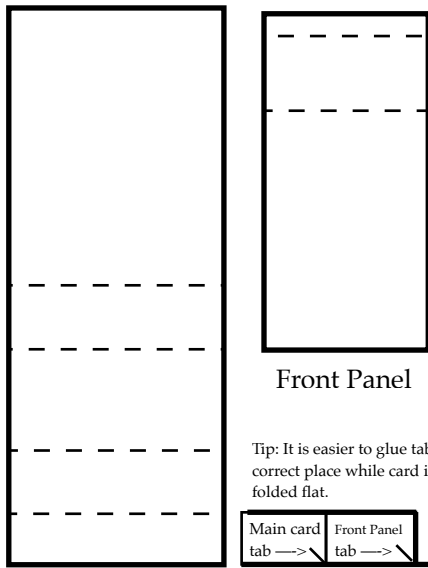


Tall Stand Up Card



Card Base

Side View

Tip: It is easier to glue tabs in correct place while card is folded flat.

Main card tab → Front Panel tab →

Measurements:

Card Base: 4.25" x 11"
score on the long side at:
5.5", 6.75", 8.75", & 10"

Front card stock panel:
2.75" x 5.625"
score on the long side at:
0.375" x 1.625"

DSP:

4" x 5.25" (card base)
1" x 2.5" (front panel)
2.5" x 3.75" (front panel)
1" x 4" (top of bottom box)
1.75" x 4" (front of bottom box)

Peony Stand Up Card



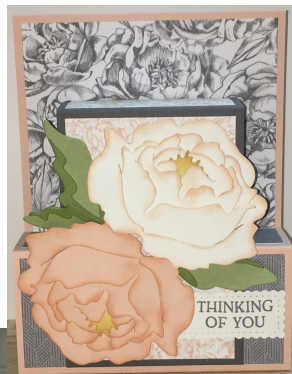
Measurements:

Card Base: 4.25" x 11"
score on the long side at:
5.5", 6.75", 8.75", & 10"

Front card stock panel:
2.75" x 5.625"
score on the long side at:
0.375" x 1.625"

DSP:

4" x 5.25" (gray floral)
1" x 2.5" (pink floral)
2.5" x 3.75" (pink floral)
1" x 4" (gray)
1.75" x 4" (gray)



Cardstock:

Petal Pink (card base and flower)
Whisper White
Pear Pizzaz (leaves)
Old Olive (leaf accent)
So Saffron (center of flower)

Designer Series Paper:

Peony Garden

Tools:

Prized Peony die cuts
Stitched so Sweetly die cuts:
smallest scalloped rectangle

Stamp Sets:

Blossoms in Bloom: sentiment

Inks:

Basic Gray
Petal Pink
So Saffron