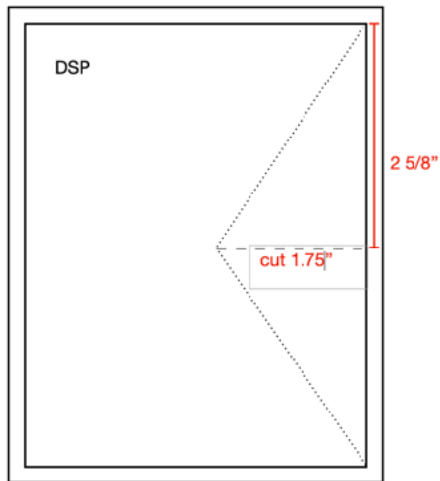


DSP Wings Card



Card Base 4.25" x 5.5"

DSP 4" x 5.25"

Measure down 2 5/8" and cut 1.75" towards the center. Score along the dotted lines or just fold them back as in the picture below.



This card is not my original design. I can't remember who designed it.

Materials:

Stamp Set: So Sentimental

Card Base: Crushed Curry

DSP: See a Silhouette (discontinued)

Card stock: Whisper White

Ink: Poppy Parade

Embellishments: Basic Rhinestones

Tools: Stitched So Sweetly Die Cut



Materials:

Stamp Set: Gather Together

Card Base: Cajun Craze

DSP: Gilded Autumn Specialty

Card stock: Very Vanilla, Cajun Craze

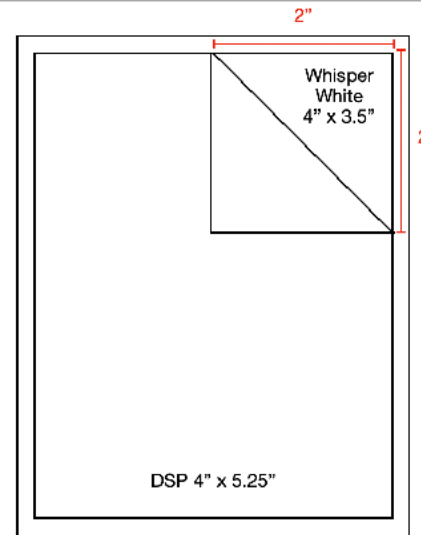
Ink: Early Espresso

Embellishments: Braided Linen

Trim, Gold Embossing Powder

Tools: Gathered Leaves Dies

DSP Corner Fold Card



Card Base 4.25" x 5.5"

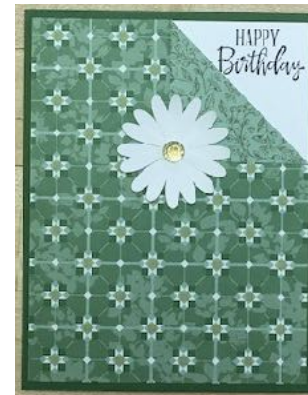
DSP 4" x 5.25"

To fold down the corner; mark down 2" from top right hand corner and mark 2" across the top from the top right hand corner

Whisper White card stock: I just used a 4" x 3.5" piece behind the DSP but you could use a piece the same size as the DSP (4" x 5.25")

Inside: add a 4" x 5.25" piece of white card stock

Place Daisy as shown.



This card is not my original design. I can't remember who designed it.

Stamp Set: Seaside Notions

Card Base: Garden Green

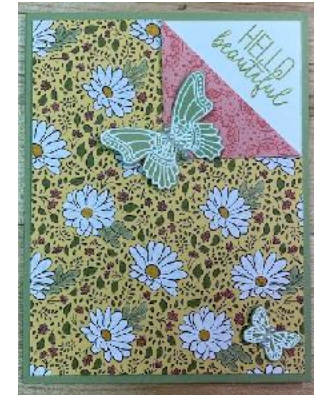
DSP: Garden Lane (Discontinued)

Card stock: Whisper White

Ink: Staz On Black

Embellishments: gold faceted gem (Discontinued)

Tools: Medium Daisy Punch



Materials:

Stamp Set: Butterfly Gala

Card Base: Pear Pizzazz

DSP: Ornate Garden

Card stock: Pear Pizzazz, Whisper White

Ink: Pear Pizzazz

Embellishments: Pearls, White embossing powder

Tools: Butterfly Duet Punch