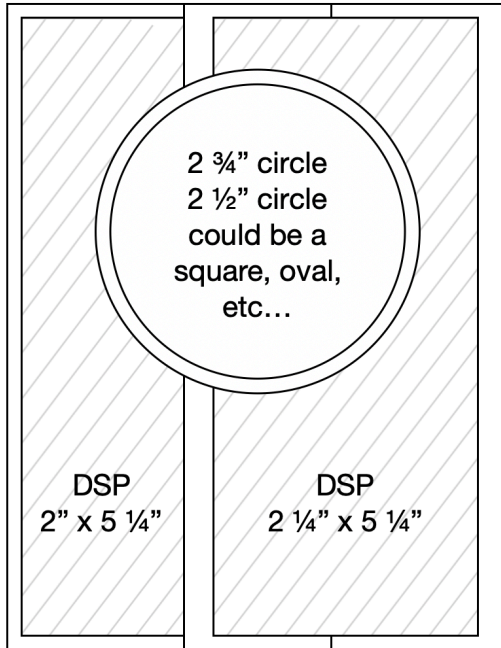


## Z Fold Pop Up Card



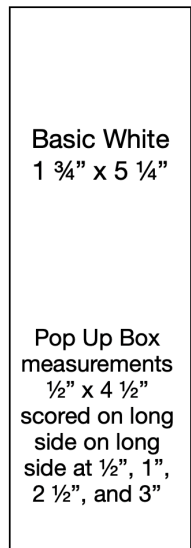
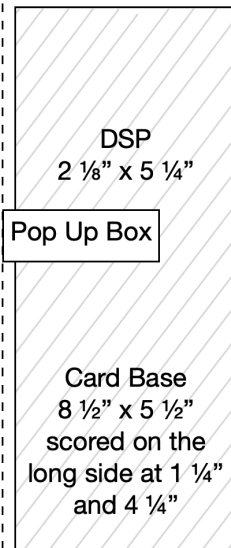
I was inspired by [Beth McCollough's](#) wintry pop up card.

This fits a standard invitation size envelope (4  $\frac{3}{8}$ " x 5  $\frac{3}{4}$ " )

It starts as a standard card base with one extra score line at 1  $\frac{1}{4}$ " to fold the front of the card back on its self.

I glue the bottom of the pop up box first and then lay it flat and then put adhesive on the side of the box and close the card to adhere.

Fold towards the front of the card and attach a 2  $\frac{1}{4}$ " x 5  $\frac{1}{4}$ " piece of DSP to the flap being sure that the DSP covers the Basic White on the inside of the card.



Basic White  
1  $\frac{3}{4}$ " x 5  $\frac{1}{4}$ "

Pop Up Box  
measurements  
 $\frac{1}{2}$ " x 4  $\frac{1}{2}$ "  
scored on long  
side on long  
side at  $\frac{1}{2}$ ", 1",  
2  $\frac{1}{2}$ ", and 3"

## Pansy Patch Pop Up



**Cardstock:**  
Fresh Freesia  
Basic White  
Pansy Petals DSP

**Stamp Set:**  
Pansy Patch

**Die Cuts:**  
Pansy Dies

**Ink:**  
Fresh Freesia,  
Gorgeous Grape, Pale  
Papaya, Calypso  
Coral, Soft Succulent,  
Evening Evergreen

