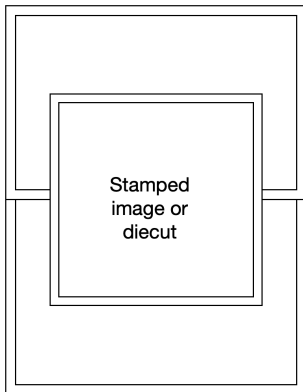
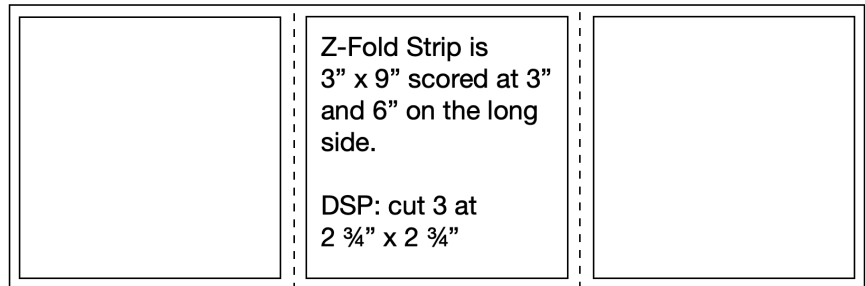
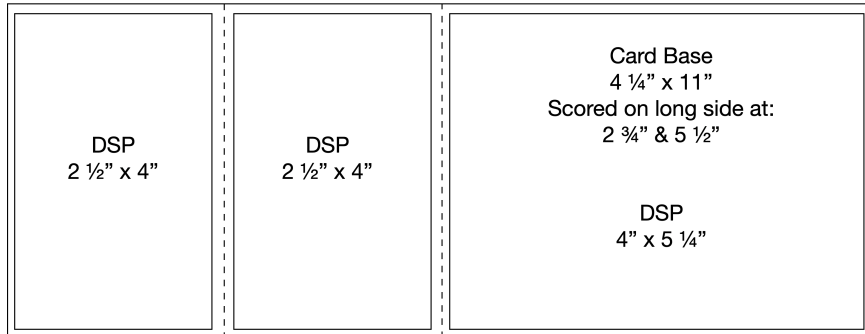


Portrait Z-Fold Card



Fold the card base into a "Z" Basically the front of the card is folded back on itself. Make sure you glue all your DSP to the card base before gluing on the insert. Don't try to glue both sides of the insert at once. Start with the top one first.

Glue the top panel of the insert to the front panel of the z-folded card front. Remember you will only put glue on half of the panel. Once this is in place you will be able to fold the insert behind the front panel towards the inside of the card and glue the last panel to the back of the card base.



Glue

stampwithtltc.com

Glue

Butterfly Bijou Z-Fold Card



Butterfly Bijou DSP (sold out)

Framed for You stamps
(will be discontinued the end May 3, 2021)

Brilliant Wings Dies: NEW

Scripty 3D embossing
folder used on highland
heather cardstock.

Cardstock: Gorgeous Grape, Highland Heather, and So Saffron

Ink: Memento Black

Embellishments:

Basic Rhinestones

Ornate Garden Ribbon Combo: Calypso Coral (will be discontinued the end May 3, 2021)

stampwithtltc.com