

Picture This Peekabook Farm Card



Card Base 4 ¼" x 11"
scored at 5 ½"

Mat 5 ¼" x 4"

DSP 5" x 3 ¾"

Instructions:

Use Picture This Die cut to cut out rectangles from and extra piece of Crumb Cake and piece of DSP.

Replace rectangles in the DSP with the rectangles cut from Crumb Cake.

Now stamp animals onto the crumb cake and DSP so that the hooves overlap onto the DSP.

I used a small circle of crumb cake colored with So Saffron for the center of the daisy.

Materials used:

Bloom Where You're Planted DSP
Crumb Cake cardstock
Cajun Craze cardstock
Early Espresso Stamp Pad
Crumb Cake Stampin' Blends
So Saffron Stampin' Blends
Medium Daisy Punch

Peekaboo Farm Fence Card

Materials used:

Peekaboo Farm
Stamp Set

Stampin' Blends:

Basic Black

Basic Gray

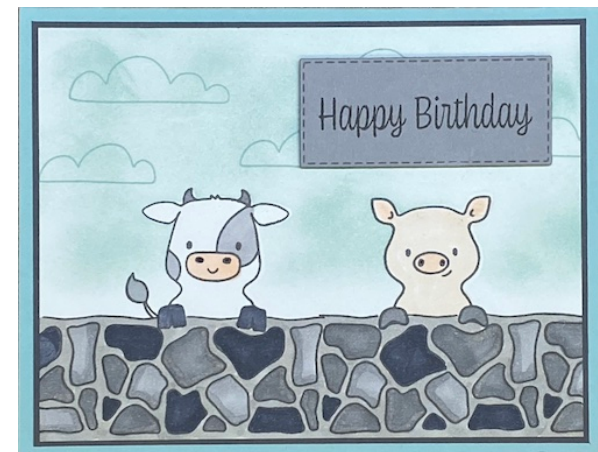
Petal Pink

Smoky Slate

Pool Party, Basic

Gray and Basic

White Cardstock



Card Base 5 ½" x 8 ½" scored at 4 ¼"

Mat 5 ¼" x 4"

Basic White 5 ⅛" x 3 ⅞"

Blending Brush
Pool Party ink

Basic Gray Ink

Seet as a Peach
stamp set

Stitched Rectangle
dies

Instructions:

Using Basic Gray ink to stamp fence across the piece of Basic White cardstock.

Stamp two animals with hooves in the open spots on the fence. There are gaps in the fence for this purpose.

I used the Happy Birthday from Sweet as a Peach for the Sentiment.

Used a stitched rectangle for sentiment.