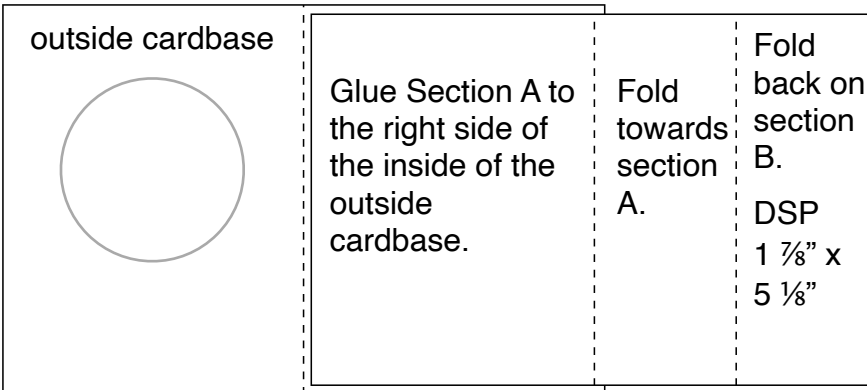
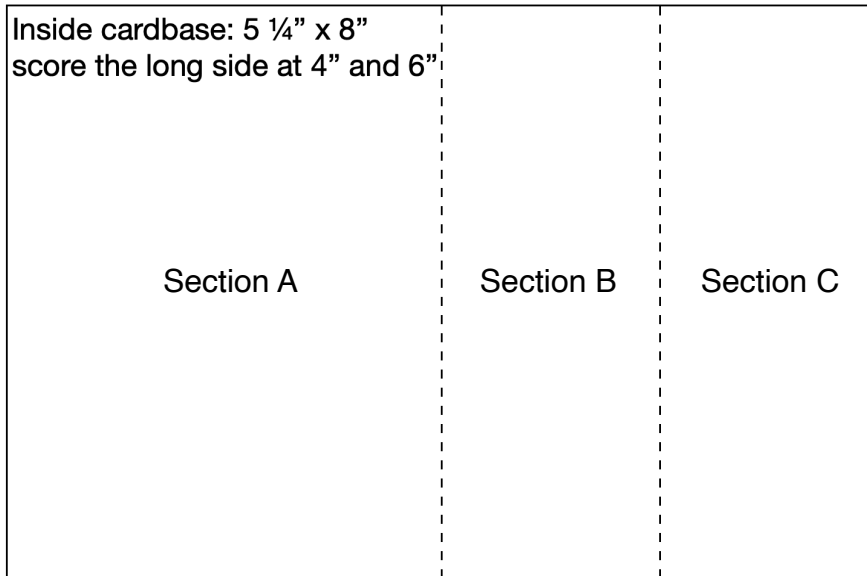


Inside Z-Fold Card

Outside cardbase: 5 1/2" x 8 1/2"
score the long side at 4 1/4"

Inside cardbase: 5 1/4" x 8"
score the long side at 4" and 6"



Use a diecut or a punch to cut a shape out of the front of the Outside cardbase. If decorating front with DSP you will need to cut it as well.

Adhere the cut out piece to section B so that when the card is folded, the cutout piece fits back into the front of the card.

Sailboat on the Horizon Card



Product List

- [Misty Moonlight 8-1/2" X 11" Cardstock \[153081\] \\$8.75](#)
- [Fresh Freesia 8 1/2" X 11" Cardstock \[155613\] \\$8.75](#)
- [Night Of Navy 8-1/2" X 11" Cardstock \[100867\] \\$8.75](#)
- [New Horizons 6" X 6" \(15.2 X 15.2 Cm\) Designer Series Paper \[157768\] \\$11.50](#)
- [Let's Set Sail Bundle \(English\) \[157906\] \\$31.50](#)
- [Painted Texture 3 D Embossing Folder \[154317\] \\$9.00](#)
- [Night Of Navy Classic Stampin' Pad \[147110\] \\$7.50](#)