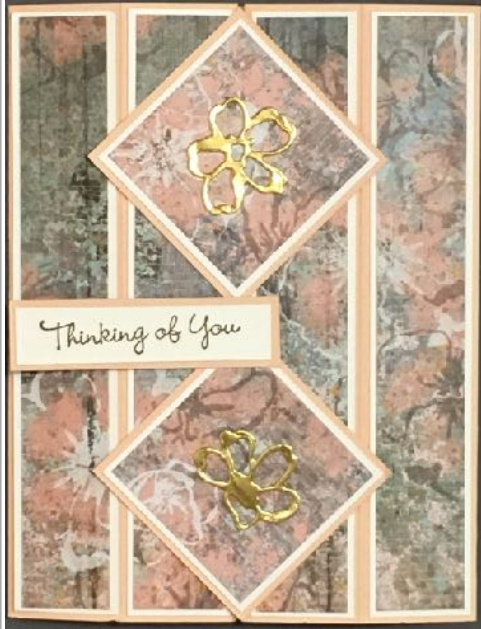


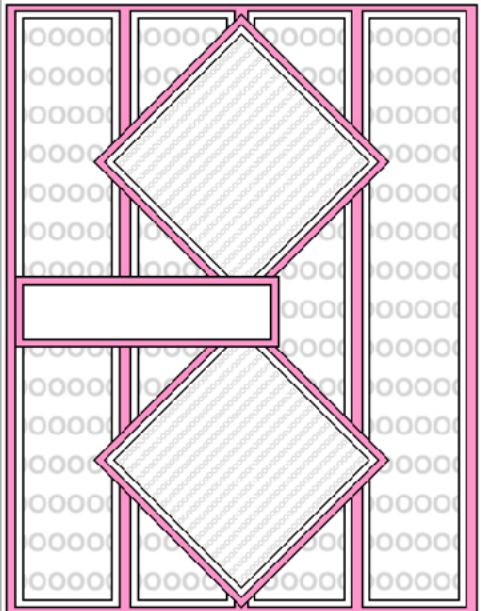
Gatefold Pop Up Card 1



Card Base:
5 1/2" X 8 1/2" scored on the long side at: 1 1/16", 2 1/8", 6 3/8", & 7 7/16"

Inside of card:
BW: 4 1/8" x 5 3/8"
DSP 4" x 5 1/4"

Pop up cardstock piece:
1" x 6 3/8" scored on the long side at 1/2", 3", 3 1/2", & 6"
(Pop up piece is attached to the card base on the bottom and left side of the pop up box)



Inside Square:
DSP: 2 1/8" x 2 1/8"
BW: 2 1/4" x 2 1/4"
CS: 2 3/8" x 2 3/8"

Outside Rectangles:
DSP (4): 13/16" X 5 1/4"
Mat (4): 15/16" X 5 3/8"

Outside Squares:
DSP (2): 1 5/8" x 1 5/8"
Mat (2): 1 3/4" x 1 3/4"
Mat (2): 1 7/8" x 1 7/8"

Sentiment:
Basic White: 1/2" X 2 1/4"
CS: 5/8" X 2 3/8"

Gatefold Pop Up Card 2

Note: The pop up box is glued on the inside of the card. I centered it top to bottom and on the far left side. You want it as close to the score line as possible with out going over it. You will actually glue the bottom of the pop up box and the left side of the pop up box to the card base.



The Inside square is glued to the top of the pop up box. Be sure to test that your card closes properly before securing it to the box.

Product List

- [Texture Chic 12" X 12" \(30.5 X 30.5 Cm\) Specialty Designer Series Paper \[158808\] \\$15.00](#)
- [Chic Dies \[158815\] \\$37.00](#)
- [Go To Greetings Cling Stamp Set \(English\) \[158763\] \\$24.00](#)
- [Petal Pink 8-1/2" X 11" Cardstock \[146985\] \\$9.25](#)
- [Basic White 8 1/2" X 11" Cardstock \[159276\] \\$10.25](#)
- [Soft Suede Classic Stampin' Pad \[126978\] \\$6.50](#)
- [Gold Foil Sheets \[132622\] \\$5.00](#)