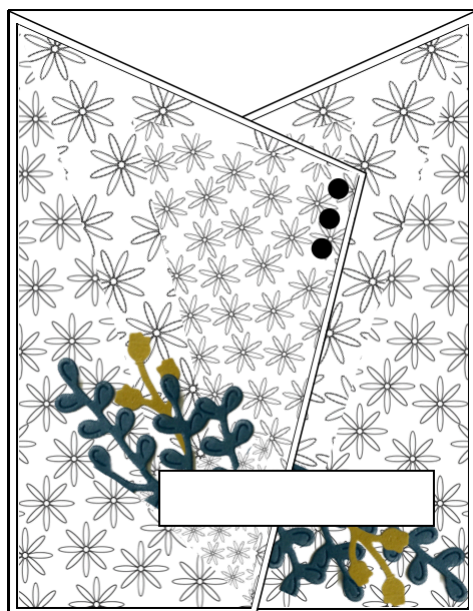
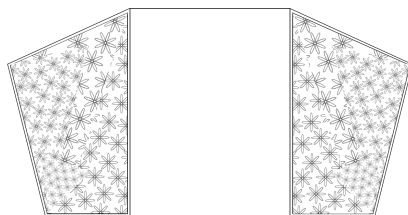


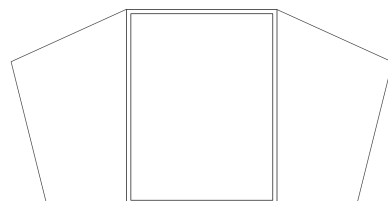
## Angled Gate Fold Card 1



Unfolded Card: Outside



Unfolded Card: Inside



Start by cutting a piece of cardstock 5 1/2" X 11" and scoring along the 11" side at 3 3/8" and 7 5/8". This forms your basic card base.

Now use the card base template on page 3 to cut the angles off each side of the card.

Cut your DSP for each side of the gate fold using the template on page 4.

Cut a piece of Basic White at 4" x 5 1/4" for the inside of the card.

Decorate as you wish.

I cut apart the large leafy die cut from the Gorgeously made dies to create a swag behind the sentiment.

## Angled Gate Fold Card 2

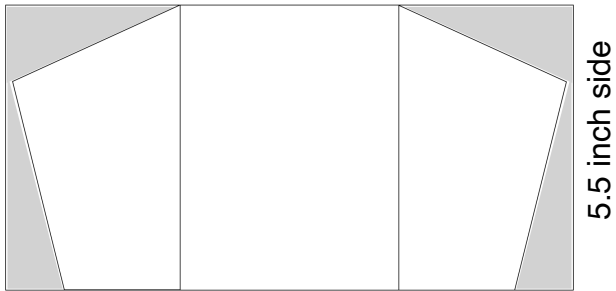


### Product List

- [Masterfully Made 12" X 12" \(30.5 X 30.5 Cm\) Designer Series Paper \[161192\] \\$12.50](#)
- [Gorgeously Made Dies \[161202\] \\$32.00](#)
- [Bough Punch \[157711\] \\$22.00](#)
- [Pretty Peacock Classic Stampin' Pad \[150083\] \\$9.00](#)
- [Basic White 8 1/2" X 11" Cardstock \[159276\] \\$10.50](#)
- [Pretty Peacock 8-1/2" X 11" Cardstock \[150880\] \\$10.00](#)
- [Brushed Metallic Adhesive Backed Dots \[156506\] \\$9.00](#)
- [Distressed Gold 12" X 12" \(30.5 X 30.5 Cm\) Specialty Paper \[159237\] \\$5.00](#)
- [Gorgeously Made Cling Stamp Set \(English\) \[161193\] \\$24.00](#)
- [Gorgeously Made Bundle \(English\) \[161203\] \\$50.25](#)

# Angled Gate Fold Card 3

5 1/2" X 11" Card Base scored at 3 3/8" and 7 5/8"



11 inch side

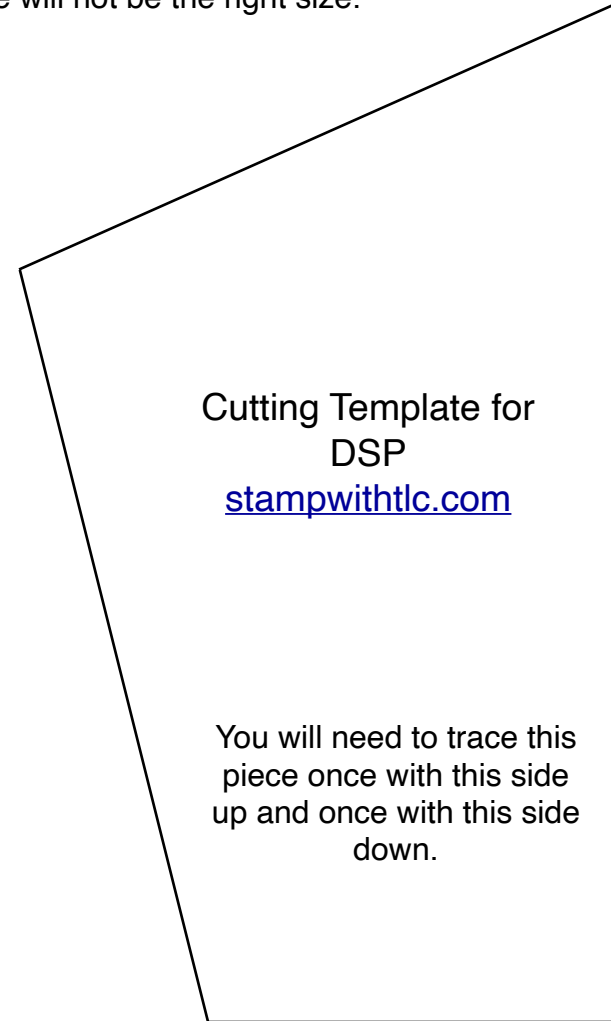
Cutting Template for  
Card Base  
[stampwithtlc.com](http://stampwithtlc.com)

You will need to trace this  
once with this side up  
and once with this side  
down. It depends on  
which side of the card  
you are working with.

Line this side up with the score line and trace along other two sides.

# Angled Gate Fold Card 4

NOTE: Make sure you print this page at full size.  
Some printers like to shrink to fit and then your  
template will not be the right size.



Cutting Template for  
DSP  
[stampwithtlc.com](http://stampwithtlc.com)

You will need to trace this  
piece once with this side  
up and once with this side  
down.