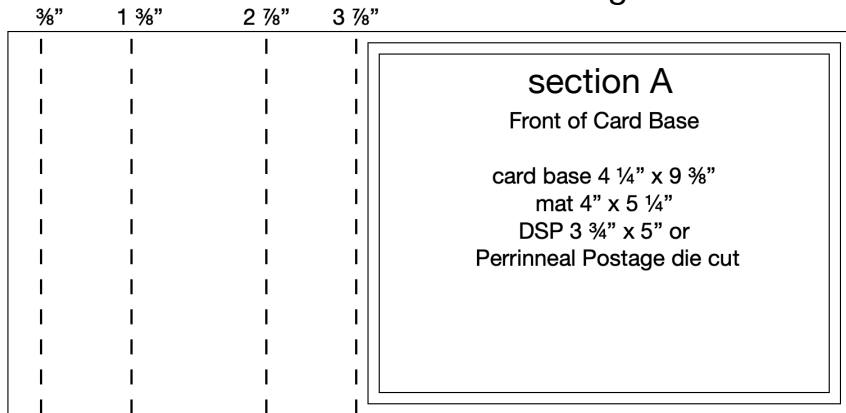


Lavender Pop Up Column Card 1



Gorgeous Grape card base:
 4 1/4" x 9 3/8"
 score the long side at: 3/8", 1 3/8", 2 7/8" and 3 7/8"
 mat 4" x 5 1/4"
 DSP was cut using the largest Perennial Postage Die

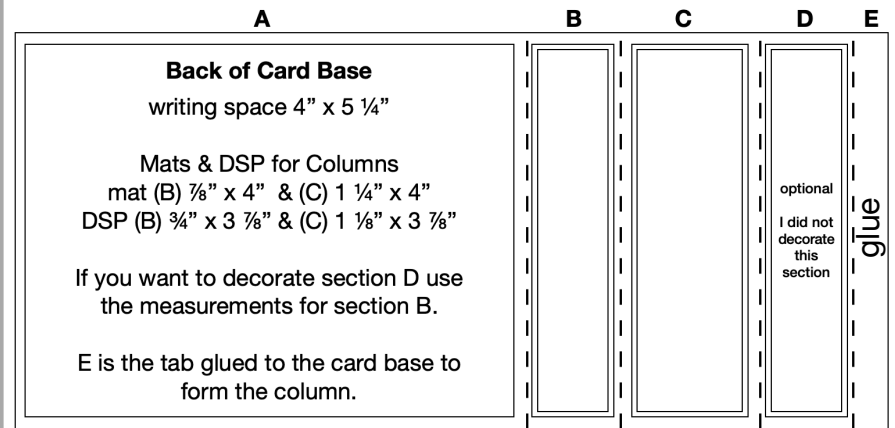


Once you have cut and scored the card base, glue in the mat and DSP to the card base as indicated by section A in the card sketch above.

Now flip over the whole Card base and glue a piece of Very Vanilla Cardstock to the back of Section A. This can be used for writing a message.

Glue the mats and DSP to sections B & C. All measurements are given inside the sketch for the back of the card base. Decorating section D is optional.

Lavender Pop Up Column Card 2



Section E is the tab that will be glued to the front of the card base to form the column.

Once you have glued all the mats and DSP to the card base, make sure to fold along all the score lines to prepare them to make the column.

Put adhesive on the backside of the card base along the E section as shown in the sketch above.

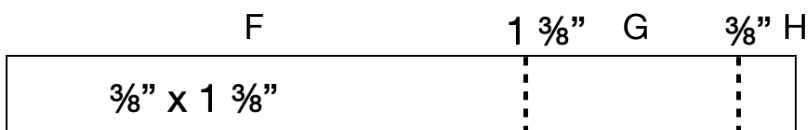
Fold over the D & E Sections along the score line between C & D toward the non decorated side.

Now Fold along the score line between sections A & B and press to close the column against the card. This should ensure that the E Tab is glued to the proper place.



Lavender Pop Up Column Card 3

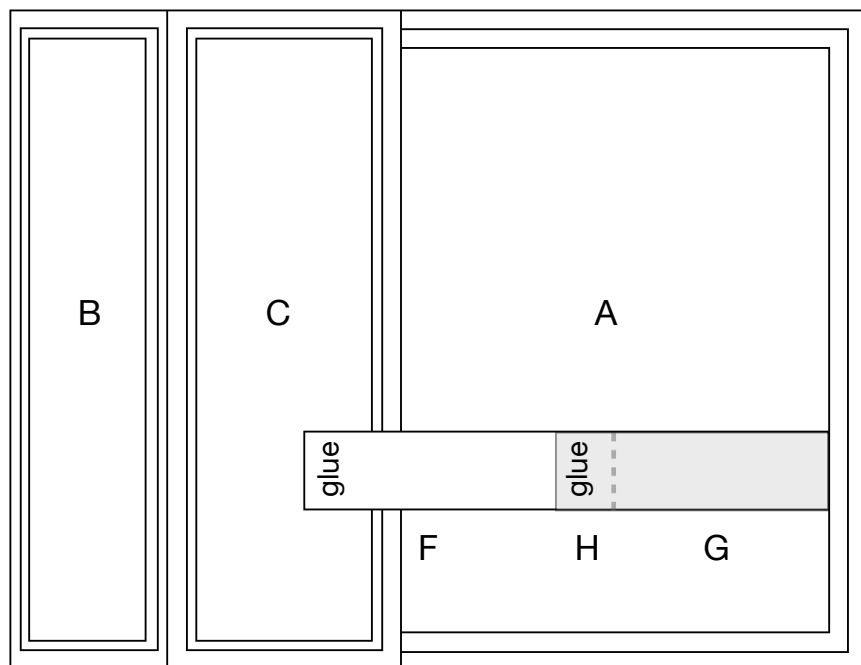
Cut a piece of Gorgeous Grape card stock $\frac{3}{8}$ " x $1 \frac{3}{8}$ " and score on the long side at $\frac{3}{8}$ " and $1 \frac{3}{8}$ "



While column is folded flat as shown below, glue the left side of section F to section C.

Fold under section G & F behind section F and put a dot of glue on section H to adhere to the card base.

Decorate as shown or as you wish.



Lavender Pop Up Column Card 4

Product List

- [Perennial Lavender 12" X 12" \(30.5 X 30.5 Cm\) Designer Series Paper \[162593\] \\$12.50](#)
- [Everyday Details Cling Stamp Set \(English\) \[162861\] \\$24.00](#)
- [Perennial Postage Dies \[162607\] \\$33.00](#)
- [Petal Park Builder Punch \[160576\] \\$22.00](#)
- [Paper Butterfly Accents \[162612\] \\$8.00](#)
- [Gorgeous Grape 8-1/2" X 11" Cardstock \[146987\] \\$10.00](#)
- [Very Vanilla 8-1/2" X 11" Cardstock \[101650\] \\$10.50](#)
- [Soft Shimmer 12" X 12" \(30.5 X 30.5 Cm\) Specialty Paper \[161750\] \\$11.00](#)
- [Purple Fine Shimmer Gems \[162611\] \\$8.00](#)
- [Gorgeous Grape Classic Stampin' Pad \[147099\] \\$9.00](#)
- [Multipurpose Liquid Glue \[110755\] \\$5.50](#)
- [Small Blending Brushes \[160518\] \\$12.00](#)
- [Pretty Peacock Classic Stampin' Pad \[150083\] \\$9.00](#)
- [Blackberry Bliss Classic Stampin' Pad \[147092\] \\$9.00](#)

