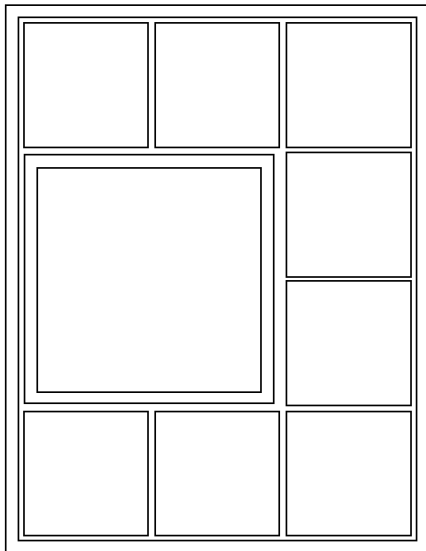


Simply Zinnia Cards 1



Berry Burst Card Base
5 ½" x 8 ½"
scored on the long side at 4 ¼"

Mat: 4" x 5 ¼"

8 - 1¼" x 1¼" DSP squares

Cardstock Square: 2 ½" x 2 ½"

BW Cardstock Square:
2 ¼" x 2 ¼"

- ◆ Start by laying out the DSP squares and the 2 ½" square onto the mat to arrange the spacing to your liking.
- ◆ Glue each piece in place.
- ◆ Glue the Mat to the card base.
- ◆ Stamp a sentiment on the Basic White piece and assemble your zinnia.

Note: I like to use my bone folder to curve the petals a little before assembling.

Optional: use a Stampin' Dimensional to attach the center to the flower.

- ◆ Glue the flower to the basic white cardstock, below the zinnia.
- ◆ Optional: add sequins to embellish



Simply Zinnia Cards 2



Pecan Pie Cardbase:
4 ¼" x 8" scored on the long side at 1" and 4 ½"

Fold along the 4 ½" score line and use the template on page 3 to cut the angle from the fold to the next score line.

Now glue the sides of the pot together leaving the top and the middle unglued.

Fold the 1" portion to the outside of the card.

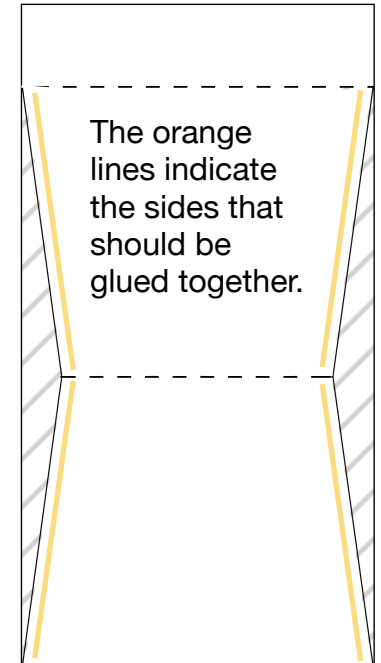
To embellish the card base. Add ribbon around the 1" portion using tear n' tape. Then adhere the 1" flap to the pot using glue or Stampin' Dimensionals.

Inside of Card:

Pecan Pie: 3" x 5 ⅛"
Basic White: 2 ⅞" x 5"
3 Zinnias and 4 Leaves

Assemble the Zinnias as you wish. I like to use a bone folder to curve the petals and use a Stampin' Dimensional to attach the center.

Stamp a message on the Basic White piece and then glue it to the piece of Pecan Pie cardstock. Decorate the top portion of this piece with the zinnias and leaves.



The orange lines indicate the sides that should be glued together.

Simply Zinnia Cards 3

Template

Template for cutting the angles on the bottom portion of the pot. Do not cut the 1" flap.



Simply Zinnia Cards 4

Product List

- [Basic White 8 1/2" X 11" Cardstock \[159276\] \\$13.00](#)
- [Lemon Lolly 8 1/2" X 11" Cardstock \[161720\] \\$11.50](#)
- [Simply Zinnia Dies \[163479\] \\$33.00](#)
- [Pecan Pie 8 1/2" X 11" Cardstock \[161717\] \\$11.50](#)
- [Petunia Pop 8 1/2" X 11" Cardstock \[163801\] \\$11.50](#)
- [Summer Splash 8 1/2" X 11" Cardstock \[163797\] \\$11.50](#)
- [Pretty In Pink 8 1/2" X 11" Cardstock \[163793\] \\$11.50](#)
- [Granny Apple Green 8-1/2" X 11" Cardstock \[146990\] \\$11.50](#)
- [Pretty In Pink Classic Stampin Pad \[163807\] \\$9.00](#)
- [Petal Pink & White 1/4" \(6.4 Mm\) Diagonal Trim Combo Pack \[163417\] \\$10.00](#)
- [Flowering Zinnias 12" X 12" \(30.5 X 30.5 Cm\) Designer Series Paper \[163469\] \\$12.50](#)
- [Berry Burst 8-1/2" X 11" Cardstock \[144243\] \\$11.50](#)
- [Lemon Lime Twist 8-1/2" X 11" Cardstock \[144245\] \\$11.50](#)
- [Lemon Lime Twist Classic Stampin' Pad \[147145\] \\$9.00](#)
- [Adhesive Backed Shiny Sequins \[163484\] \\$7.50](#)
- [Stampin' Dimensionals \[104430\] \\$4.25](#)