

Thoughtful Journeys Accordion Fold Card



Basic White Card base:
6" x 12" scored on the
long side at: 1 1/2", 3", 5 1/2"
8"

See Fig 1 and fold along
the score lines making
mountain and valley folds
as indicated.

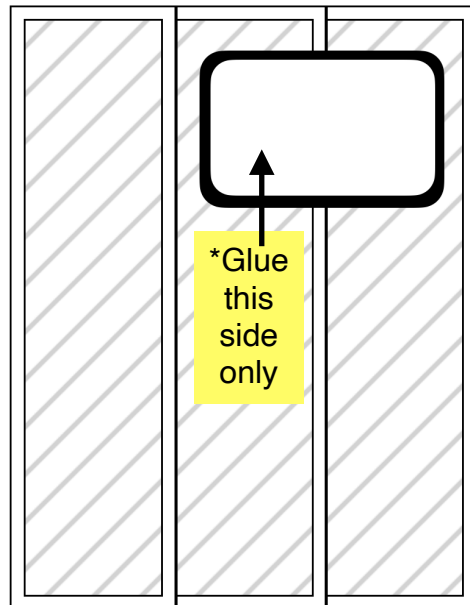
6" x 6" Designer Series
Paper: Start by cutting the
height of the DSP down to
5 1/2" by taking 3/4" off the
top or bottom of the paper

Then make vertical cuts at
1 1/4" and 2 1/4" so that you
have three pieces of DSP
measuring:

- 1 1/4" x 5 1/4"
- 2 1/4" x 5 1/4"
- 2 1/2" x 5 1/4"

Glue each piece of DSP
to the card base starting
with the smallest on the
far left as indicated in Fig1

Note: The final piece of
DSP will not be centered
in the last section of the
card base. It should be
glued to the far right
leaving a margin that
matches the other
sections.



Thoughtful Journeys Accordion Fold Card

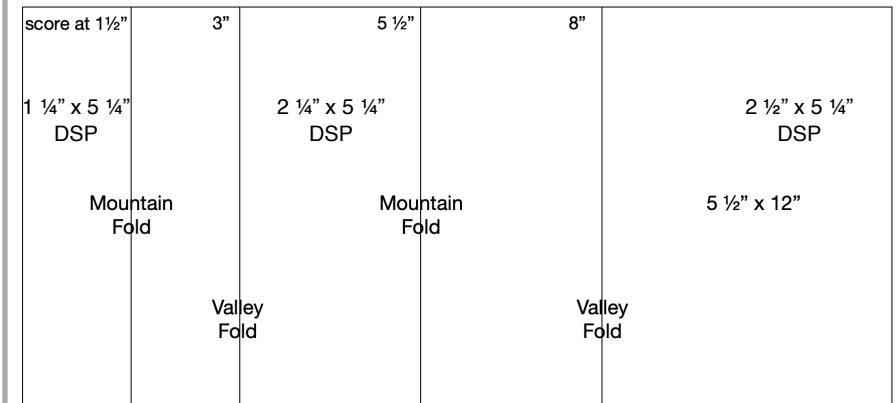


Fig 1

Add a layered die cut for the sentiment or use your favorite punch.

Be sure to stamp your sentiment before glueing to the mat and/or card base.

***Note:** Glue only the left side of the sentiment piece to the middle section of the card base.

Optional: Decorate with the Adhesive Backed Dragonflies & Birds

Product List

- [Thoughtful Journey 6" X 6" \(15.2 X 15.2 Cm\) Designer Series Paper \[163303\] \\$12.50](#)
- [Unbounded Love Photopolymer Stamp Set \(English\) \[163378\] \\$25.00](#)
- [Unbounded Love Dies \[163383\] \\$36.00](#)
- [Unbounded Love Bundle \(English\) \[163384\] \\$54.75](#)
- [Basic White 12 X12 \(30.5 X 30.5 Cm\) Cardstock \[159231\] \\$9.50](#)
- [Textured Metallic 12" X 12" \(30.5 X 30.5 Cm\) Specialty Paper \[163772\] \\$8.50](#)
- [Adhesive Backed Dragonflies & Birds \[162743\] \\$8.50](#)
- [Basic White 8 1/2" X 11" Cardstock \[159276\] \\$13.00](#)